



ISSN: 1949-1549

---

Released July 8, 2011, by the National Agricultural Statistics Service (NASS), Agricultural Statistics Board, United States Department of Agriculture (USDA).

## **Pelt Production Down 2 Percent**

**Mink pelt production** in the United States in 2010 totaled 2.82 million pelts, down 2 percent from 2009. Wisconsin, the largest mink producing State, produced 883,430 pelts. Utah, the second largest producing State, produced 677,900 pelts.

The number of pelts by color class as a percent of the total United States production in 2010 is as follows: Black at 51 percent, Mahogany at 26 percent, Blue Iris at 9 percent, and Demi/Wild at 4 percent. The remaining color classes accounted for 10 percent.

**Value of pelts produced** during the 2010 crop year was 231 million, up 24 percent from \$187 million a year ago. The average price per pelt for the 2010 crop year was \$81.90, up \$16.80 from \$65.10 in 2009.

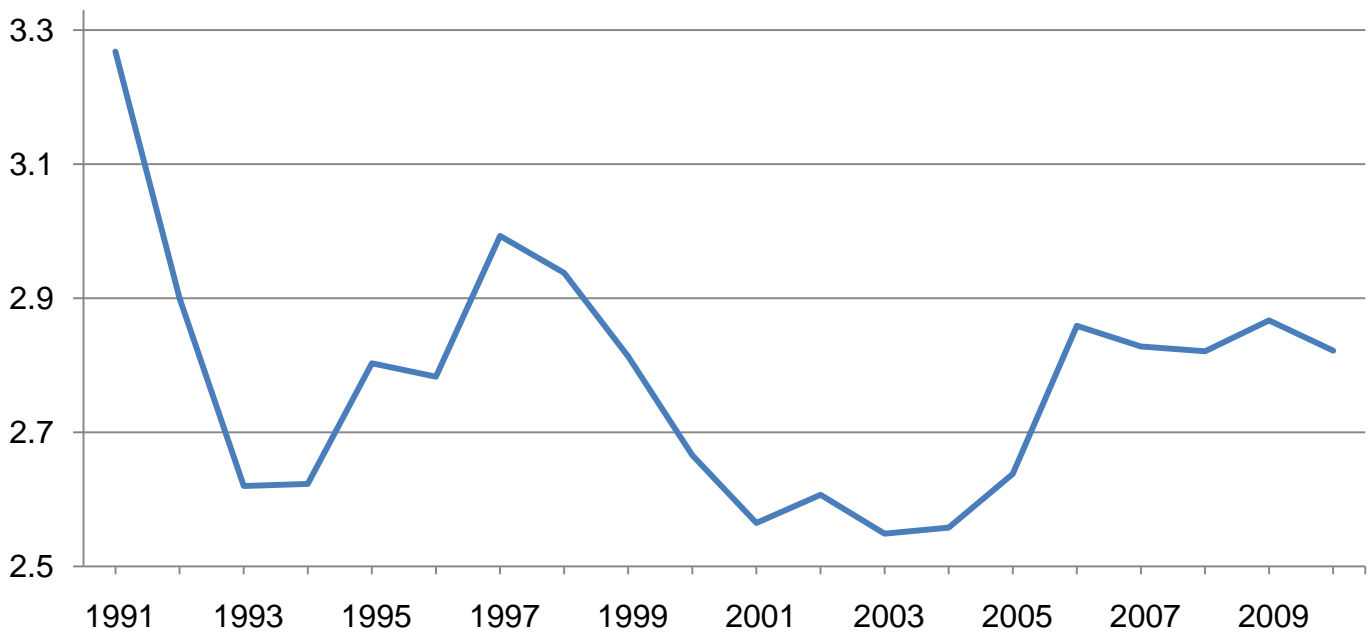
**Female mink bred** to produce kits in 2011 totaled 701,000, up 5 percent from the previous year.

Percent of total females bred to produce kits in 2011 by color class is as follows: Black at 52 percent, Mahogany at 25 percent, Blue Iris at 8 percent, and Demi/Wild at 4 percent. The remaining color classes accounted for 11 percent.

**Mink farms producing pelts** in 2010 totaled 265, down 5 percent from a year ago.

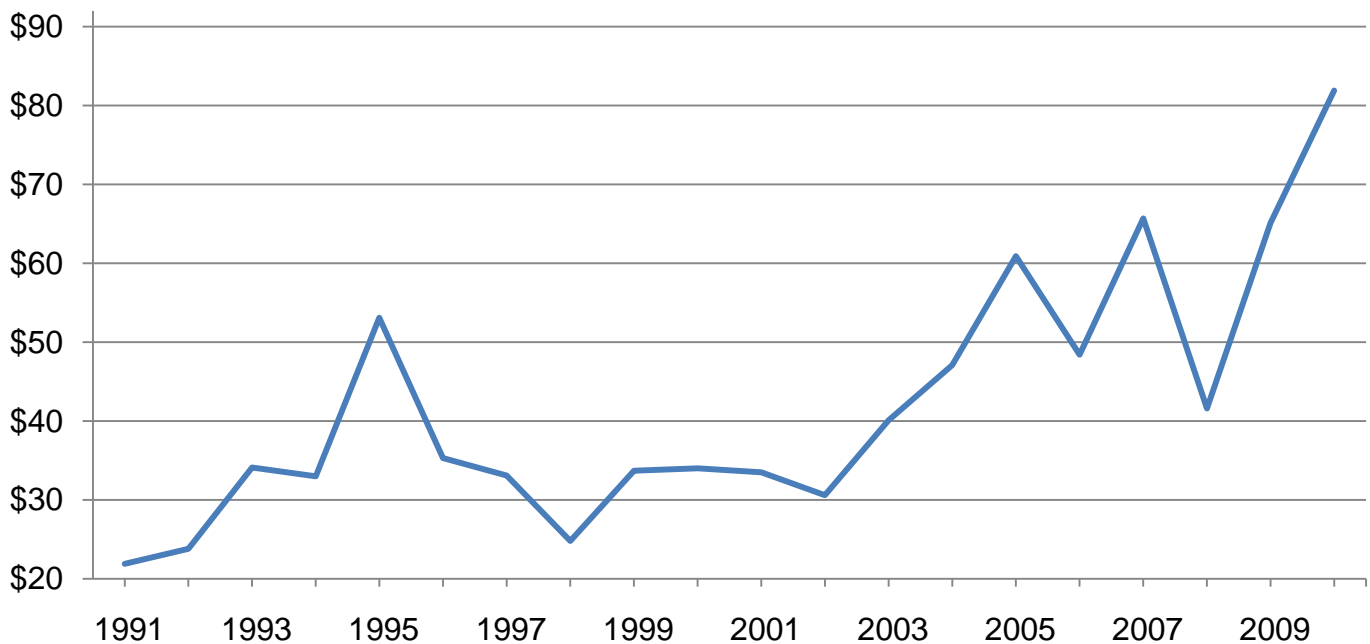
## Mink Pelts Produced – United States

Million



## Mink Average Price Per Pelt – United States

Dollars



### Mink Pelts Produced and Females Bred by Color Class – United States: 2009-2011

Color class	Pelts produced		Females bred to produce kits	
	2009 (number)	2010 (number)	2010 (number)	2011 (number)
Black .....	1,505,500	1,443,600	339,400	363,500
Demi/Wild .....	123,900	101,200	27,600	26,120
Pastel .....	56,200	66,820	18,300	17,200
Sapphire .....	94,400	76,480	25,900	20,380
Blue Iris .....	272,400	263,620	66,600	58,000
Mahogany .....	683,500	725,900	160,700	171,860
Pearl .....	57,100	74,900	12,600	18,600
Lavender .....	4,400	6,030	1,700	2,410
Violet .....	14,500	9,440	4,000	3,550
White .....	48,800	46,800	11,800	17,780
Other .....	6,000	7,410	1,600	1,600
Total .....	2,866,700	2,822,200	670,200	701,000

### Mink Farms, Pelts Produced, Average Price, and Value – United States: 1991-2010

Year	Mink farms (number)	Pelts produced (number)	Average marketing price (dollars)	Value of mink pelts (dollars)
1991 .....	683	3,268,200	21.90	71,573,580
1992 .....	571	2,900,000	23.80	69,020,000
1993 .....	523	2,620,300	34.10	89,352,230
1994 .....	484	2,623,200	33.00	86,565,600
1995 .....	478	2,803,100	53.10	148,844,610
1996 .....	449	2,783,200	35.30	98,246,960
1997 .....	452	2,993,300	33.10	99,078,230
1998 .....	438	2,938,100	24.80	72,864,880
1999 .....	398	2,812,500	33.70	94,781,250
2000 .....	350	2,666,100	34.00	90,647,400
2001 .....	329	2,565,300	33.50	85,937,550
2002 .....	324	2,607,300	30.60	79,783,380
2003 .....	305	2,549,000	40.10	102,214,900
2004 .....	296	2,558,100	47.10	120,486,510
2005 .....	275	2,637,800	60.90	160,642,020
2006 .....	279	2,858,800	48.40	138,365,920
2007 .....	283	2,828,200	65.70	185,812,740
2008 .....	274	2,820,700	41.60	117,341,120
2009 .....	278	2,866,700	65.10	186,622,170
2010 .....	265	2,822,200	81.90	231,138,180

**Pelts Produced by Color Class – Selected States and United States: 2009**

States	Black (number)	Demi/Wild (number)	Pastel (number)	Sapphire (number)	Blue Iris (number)	Mahogany (number)
Idaho .....	107,000	13,500	3,400	9,500	(D)	108,000
Illinois .....	56,000	(D)	-	-	(D)	(D)
Iowa .....	79,000	(D)	(D)	(D)	6,500	(D)
Michigan .....	29,000	-	(D)	(D)	(D)	3,400
Minnesota .....	88,000	35,000	(D)	(D)	55,000	80,000
Montana .....	(D)	(D)	-	-	(D)	(D)
Ohio .....	47,000	(D)	(D)	(D)	(D)	21,000
Oregon .....	158,000	(D)	-	11,000	79,000	(D)
Pennsylvania .....	28,000	(D)	(D)	5,500	11,000	(D)
South Dakota .....	(D)	(D)	(D)	-	-	(D)
Utah .....	225,000	37,000	(D)	(D)	7,500	285,000
Washington .....	69,000	(D)	-	(D)	(D)	-
Wisconsin .....	585,000	(D)	(D)	45,000	87,000	117,000
Other States <sup>1</sup> .....	34,500	38,400	52,800	23,400	26,400	69,100
United States .....	1,505,500	123,900	56,200	94,400	272,400	683,500
States	Pearl (number)	Lavender (number)	Violet (number)	White (number)	Other (number)	Total <sup>2</sup> (number)
Idaho .....	-	(D)	-	-	(D)	251,500
Illinois .....	(D)	-	(D)	(D)	(D)	71,100
Iowa .....	(D)	(D)	(D)	(D)	-	114,800
Michigan .....	-	-	-	5,500	-	45,300
Minnesota .....	-	-	-	6,000	-	267,200
Montana .....	-	-	-	-	-	22,500
Ohio .....	-	-	-	-	-	78,900
Oregon .....	-	-	(D)	-	-	270,100
Pennsylvania .....	(D)	-	-	(D)	(D)	57,300
South Dakota .....	(D)	-	-	-	-	81,500
Utah .....	(D)	-	-	(D)	-	613,500
Washington .....	-	-	-	-	-	93,500
Wisconsin .....	(D)	3,300	(D)	24,000	4,100	886,100
Other States <sup>1</sup> .....	57,100	1,100	14,500	13,300	1,900	13,400
United States .....	57,100	4,400	14,500	48,800	6,000	2,866,700

- Represents zero.

(D) Withheld to avoid disclosing data for individual operations.

<sup>1</sup> Other States also includes some pelts from the above listed States that were not published to avoid disclosing individual operations.

<sup>2</sup> Published color classes may not add to the State total to avoid disclosing individual operations.

**Pelts Produced by Color Class – Selected States and United States: 2010**

States	Black (number)	Demi/Wild (number)	Pastel (number)	Sapphire (number)	Blue Iris (number)	Mahogany (number)
Idaho .....	111,000	(D)	5,500	8,500	(D)	120,000
Illinois .....	42,000	(D)	-	(D)	(D)	(D)
Iowa .....	83,000	-	(D)	(D)	6,500	(D)
Michigan .....	28,000	-	(D)	(D)	(D)	3,000
Minnesota .....	47,000	37,000	(D)	(D)	22,000	85,000
Montana .....	5,500	(D)	-	-	(D)	13,000
Ohio .....	57,000	(D)	-	(D)	(D)	25,000
Oregon .....	159,000	(D)	(D)	12,000	69,000	(D)
Pennsylvania .....	27,000	(D)	6,000	4,900	12,500	(D)
South Dakota .....	(D)	(D)	(D)	-	-	(D)
Utah .....	245,000	(D)	(D)	12,000	(D)	300,000
Washington .....	50,000	(D)	-	-	(D)	(D)
Wisconsin .....	570,000	(D)	13,500	35,000	115,000	103,000
Other States <sup>1</sup> .....	19,100	64,200	41,820	4,080	38,620	76,900
United States .....	1,443,600	101,200	66,820	76,480	263,620	725,900
States	Pearl (number)	Lavender (number)	Violet (number)	White (number)	Other (number)	Total <sup>2</sup> (number)
Idaho .....	(D)	-	-	-	(D)	259,300
Illinois .....	(D)	-	(D)	(D)	(D)	55,260
Iowa .....	(D)	(D)	(D)	(D)	-	111,140
Michigan .....	-	-	-	4,500	-	40,500
Minnesota .....	-	-	-	3,900	-	199,730
Montana .....	-	-	-	-	-	21,900
Ohio .....	-	-	-	-	-	92,000
Oregon .....	-	-	(D)	-	-	261,300
Pennsylvania .....	(D)	-	(D)	(D)	(D)	64,520
South Dakota .....	(D)	-	-	-	-	80,000
Utah .....	(D)	-	-	(D)	-	677,900
Washington .....	-	-	-	-	-	68,200
Wisconsin .....	-	6,000	(D)	28,000	4,200	883,430
Other States <sup>1</sup> .....	74,900	30	9,440	10,400	3,210	7,020
United States .....	74,900	6,030	9,440	46,800	7,410	2,822,200

- Represents zero.

(D) Withheld to avoid disclosing data for individual operations.

<sup>1</sup> Other States also includes some pelts from the above listed States that were not published to avoid disclosing individual operations.

<sup>2</sup> Published color classes may not add to the State total to avoid disclosing individual operations.

**Female Mink Bred to Produce Kits by Color Class – Selected States and United States: 2010**

States	Black (number)	Demi/Wild (number)	Pastel (number)	Sapphire (number)	Blue Iris (number)	Mahogany (number)
Idaho .....	28,000	2,400	800	2,200	(D)	25,000
Illinois .....	15,000	(D)	-	-	(D)	(D)
Iowa .....	17,500	-	(D)	(D)	1,700	(D)
Michigan .....	7,500	-	(D)	(D)	(D)	900
Minnesota .....	11,000	7,500	(D)	100	4,800	20,000
Montana .....	1,400	(D)	-	-	(D)	(D)
Ohio .....	9,500	(D)	(D)	(D)	(D)	6,500
Oregon .....	32,000	(D)	-	2,600	17,000	(D)
Pennsylvania .....	6,500	(D)	(D)	2,600	3,700	(D)
South Dakota .....	(D)	(D)	(D)	-	-	(D)
Utah .....	65,000	11,000	(D)	(D)	4,100	70,000
Washington .....	16,000	-	-	(D)	(D)	(D)
Wisconsin .....	125,000	(D)	3,600	12,000	28,000	18,500
Other States <sup>1</sup> .....	5,000	6,700	13,900	6,400	7,300	19,800
United States .....	339,400	27,600	18,300	25,900	66,600	160,700

States	Pearl (number)	Lavender (number)	Violet (number)	White (number)	Other (number)	Total <sup>2</sup> (number)
Idaho .....	-	(D)	-	-	(D)	61,000
Illinois .....	(D)	-	(D)	(D)	-	18,400
Iowa .....	(D)	(D)	(D)	(D)	-	23,500
Michigan .....	-	-	-	1,100	-	11,100
Minnesota .....	-	-	-	(D)	-	45,800
Montana .....	-	-	-	-	-	5,800
Ohio .....	-	-	-	-	-	19,300
Oregon .....	-	-	(D)	-	-	57,500
Pennsylvania .....	(D)	-	-	(D)	-	15,900
South Dakota .....	(D)	-	-	-	-	18,200
Utah .....	(D)	-	-	(D)	(D)	170,600
Washington .....	-	-	-	-	-	21,400
Wisconsin .....	-	1,400	(D)	6,500	1,100	199,000
Other States <sup>1</sup> .....	12,600	300	4,000	4,200	500	2,700
United States .....	12,600	1,700	4,000	11,800	1,600	670,200

- Represents zero.

(D) Withheld to avoid disclosing data for individual operations.

<sup>1</sup> Other States also includes some females bred from the above listed States that were not published to avoid disclosing individual operations.

<sup>2</sup> Published color classes may not add to the State total to avoid disclosing individual operations.

**Female Mink Bred to Produce Kits by Color Class – Selected States and United States: 2011**

States	Black (number)	Demi/Wild (number)	Pastel (number)	Sapphire (number)	Blue Iris (number)	Mahogany (number)
Idaho .....	30,000	(D)	1,300	1,800	(D)	29,000
Illinois .....	14,000	(D)	-	(D)	(D)	(D)
Iowa .....	19,000	-	(D)	(D)	1,900	3,500
Michigan .....	8,500	-	(D)	(D)	(D)	(D)
Minnesota .....	17,000	(D)	(D)	(D)	5,500	20,000
Montana .....	1,600	(D)	-	-	(D)	(D)
Ohio .....	13,000	(D)	-	(D)	(D)	7,000
Oregon .....	32,000	-	-	(D)	14,500	(D)
Pennsylvania .....	7,000	(D)	2,000	2,000	3,900	(D)
South Dakota .....	(D)	(D)	(D)	-	-	(D)
Utah .....	62,000	7,500	(D)	4,500	(D)	73,000
Washington .....	10,500	-	-	-	(D)	(D)
Wisconsin .....	144,000	(D)	4,200	9,000	24,000	21,000
Other States <sup>1</sup> .....	4,900	18,620	9,700	3,080	8,200	18,360
United States .....	363,500	26,120	17,200	20,380	58,000	171,860
States	Pearl (number)	Lavender (number)	Violet (number)	White (number)	Other (number)	Total <sup>2</sup> (number)
Idaho .....	(D)	-	-	-	(D)	65,800
Illinois .....	(D)	-	(D)	(D)	(D)	20,530
Iowa .....	(D)	(D)	(D)	(D)	-	26,210
Michigan .....	-	-	-	(D)	-	11,750
Minnesota .....	-	-	-	1,300	-	53,220
Montana .....	-	-	-	-	-	7,040
Ohio .....	-	-	-	-	-	22,600
Oregon .....	-	-	(D)	-	-	54,180
Pennsylvania .....	(D)	-	(D)	(D)	(D)	16,520
South Dakota .....	(D)	-	-	-	-	15,800
Utah .....	(D)	-	-	(D)	-	168,600
Washington .....	-	-	-	-	-	15,000
Wisconsin .....	-	2,400	(D)	12,500	1,300	221,260
Other States <sup>1</sup> .....	18,600	10	3,550	3,980	300	2,490
United States .....	18,600	2,410	3,550	17,780	1,600	701,000

- Represents zero.

(D) Withheld to avoid disclosing data for individual operations.

<sup>1</sup> Other States also includes some females bred from the above listed States that were not published to avoid disclosing individual operations.

<sup>2</sup> Published color classes may not add to the State total to avoid disclosing individual operations.

## Statistical Methodology

**Survey Procedures:** Mink production data are collected from early May through late May from all known producers. Individual NASS Field Offices maintain a list of all known mink producers and use known sources of producers to update their lists. All known mink producers are mailed a questionnaire and given adequate time to respond by mail. Those who do not respond by mail are telephoned or enumerated in person. Care is exercised to account for all operations. Major auction houses, which handle producer sales, provide mink pelt price data in June. Prices are collected at the point of first sale, before marketing costs are deducted.

**Estimation Procedures:** All data are analyzed for unusual values. Data from each operation are compared to their own past operating profile and to trends from similar operations. Data for missing operations are estimated based on similar operations or historical data. Field offices prepare these estimates by using a combination of survey indications and historic trends. Individual State estimates are reviewed by the Agricultural Statistics Board for reasonableness.

**Revision Policy:** Revisions to previous estimates are made to improve year-to-year and item-to-item relationships. Estimates for the previous year are subject to revision when current estimates are made. Estimates will also be reviewed after data from the five-year Census of Agriculture are available. No revisions will be made after that date.

**Reliability:** Mink production estimates are based on a census of all known active producers and therefore, have no sampling variability. However, estimates are subject to errors such as omissions, duplication, mistakes in reporting, recording, and processing data. While these errors cannot be measured directly, they are minimized through strict quality control in the data collection process and a careful review of all reported data for consistency and reasonableness.

To assist in evaluating the reliability of the estimates in this report, the “Root Mean Square Error” is shown for selected items in the following table. The “Root Mean Square Error” is a statistical measure based on past performance and is computed using the differences between first and final estimates. The “Root Mean Square Error” for mink pelts produced over the past 10 years is 0.5 percent. This means that chances are 2 out of 3 that the final estimate will not be above or below the current estimate of 2.82 million pelts by more than 0.5 percent. Chances are 9 out of 10 that the difference will not exceed 0.8 percent.

### Reliability of Mink Estimates

[Based on data for the past ten years]

Item	Root mean square error	90 percent confidence level	Difference between first and latest estimate				
			Average	Smallest	Largest	Years	
						Below latest	Above latest
	(percent)	(percent)	(1,000)	(1,000)	(1,000)	(number)	(number)
Pelts produced .....	0.5	0.8	7	0	34	6	1
Females bred .....	0.9	1.7	4	0	15	6	2



## Information Contacts

Listed below are the commodity specialists in the Livestock Branch of the National Agricultural Statistics Service to contact for additional information. E-mail inquiries may be sent to [nass@nass.usda.gov](mailto:nass@nass.usda.gov)

Dan Kerestes, Chief, Livestock Branch .....	(202) 720-3570
Bruce Boess, Head, Poultry and Specialty Commodities Section .....	(202) 720-4447
Cody Brokmeyer – Poultry Slaughter, Turkey Hatchery, Turkeys Raised .....	(202) 690-3237
David Colwell – Cold Storage .....	(202) 720-8784
Kim Linonis – Layers, Eggs .....	(202) 690-8632
Troy Marshall – Broiler Hatchery, Chicken Hatchery, Honey .....	(202) 720-3244
Miste Salmon – Catfish Processing, Catfish Production, Trout Production, Census of Aquaculture, Egg Products, Mink .....	(202) 720-0585

## Access to NASS Reports

For your convenience, you may access NASS reports and products the following ways:

- All reports are available electronically, at no cost, on the NASS web site: <http://www.nass.usda.gov>
- Both national and state specific reports are available via a free e-mail subscription. To set-up this free subscription, visit <http://www.nass.usda.gov> and in the “Receive NASS Updates” box under “Receive reports by Email,” click on “National” or “State” to select the reports you would like to receive.
- Printed reports may be purchased from the National Technical Information Service (NTIS) by calling toll-free (800) 999-6779, or (703) 605-6220 if calling from outside the United States or Canada. Accepted methods of payment are Visa, MasterCard, check, or money order.

For more information on NASS surveys and reports, call the NASS Agricultural Statistics Hotline at (800) 727-9540, 7:30 a.m. to 4:00 p.m. ET, or e-mail: [nass@nass.usda.gov](mailto:nass@nass.usda.gov).

The United States Department of Agriculture (USDA) prohibits discrimination in all its programs and activities on the basis of race, color, national origin, age, disability, and where applicable, sex, marital status, familial status, parental status, religion, sexual orientation, political beliefs, genetic information, reprisal, or because all or a part of an individual's income is derived from any public assistance program. (Not all prohibited bases apply to all programs.) Persons with disabilities who require alternative means for communication of program information (Braille, large print, audiotape, etc.) should contact USDA's TARGET Center at (202) 720-2600 (voice and TDD).

To file a complaint of discrimination, write to USDA, Assistant Secretary for Civil Rights, Office of the Assistant Secretary for Civil Rights, 1400 Independence Avenue, S.W., Stop 9410, Washington, DC 20250-9410, or call toll-free at (866) 632-9992 (English) or (800) 877-8339 (TDD) or (866) 377-8642 (English Federal-relay) or (800) 845-6136 (Spanish Federal-relay). USDA is an equal opportunity provider and employer.